

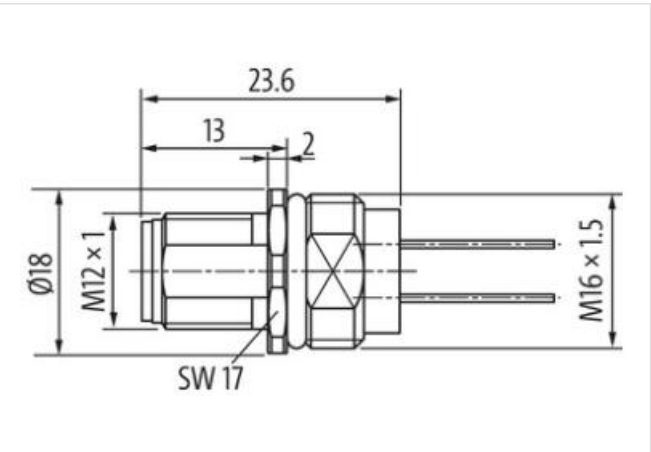
**M12 Power male recept. S-cod. front**

mPPE-wires 4x1.5 1m

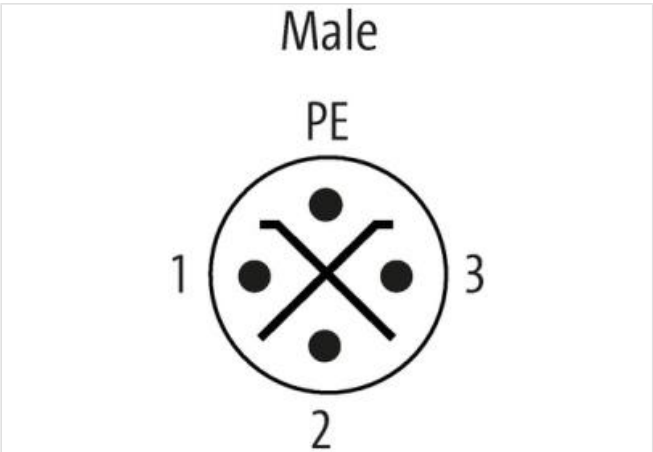
Flange male  
M12, 4-pole  
S-coded  
Front mounting  
with multi-strand wire  
The resistance to aggressive media should be individually tested for your application. Further details on request.  
Further cable lengths on request.

[Link to Product](#)

Illustration



Product may differ from Image



Cable length 1 m

**Side 1**

Tightening torque 0,6 Nm

Coating contact	gold plated
Family construction form	M12P
Thread	M12 x 1
Coding	S
Material contact	Copper alloy

#### Commercial data

ECLASS-6.0	27279220
ECLASS-6.1	27279220
ECLASS-7.0	27440103
ECLASS-8.0	27440103
ECLASS-9.0	27440103
ECLASS-10.1	27440103
ECLASS-11.1	27440103
ECLASS-12.0	27440103
ETIM-5.0	EC002061
customs tariff number	85444290
GTIN	4048879664936
Packaging unit	1

#### Electrical data | Supply

Operating voltage AC max.	630 V
Operating voltage DC max.	630 V
Current operating per contact max.	12 A

#### Installation | Connection

Mounting set	M16 x 1.5
Width across flats	SW17
Mating cycles min.	100

#### Device protection | Electrical

Degree of protection (EN IEC 60529)	IP68
Additional condition protection degree	inserted, screwed
Pollution Degree	3
Rated surge voltage	6 kV
Material group (IEC 60664-1)	III

#### Mechanical data | Material data

Material contact carrier	PA
--------------------------	----

#### Mechanical data | Mounting data

Mounting method	inserted, screwed
-----------------	-------------------

#### Environmental characteristics | Climatic

Operating temperature min.	-40 °C
Operating temperature max.	85 °C
Additional condition temperature range	depending on cable quality

#### Important installation notes

Note on strain relief	Protect the connectors by suitable measures from mechanical loads, e.g. by the usage of cable ties.
Note on bending radius	<b>Attention:</b> Observe the permissible bending radii when laying cables, as the IP protection class can be endangered by excessive bending forces.

#### Resistances | Cable

wire arrangement	black 1, black 2, black 3, green-yellow
Cable identification	940
wire arrangement	black 1, black 2, black 3, green-yellow
Material wire insulation	PE
Amount wires	4
Conductor crosssection (wire)	1,5 mm²

Min. operating temperature (static)	-40 °C
Max. operating temperature (fixed)	85 °C
Flame resistance	IEC 60332-2-2   UL 1581 § 1100 FT2   UL 1581 § 1090
chemical resistance	Good, application-related testing
Gasoline resistance	Good, application-related testing
Oil resistance	Good, application-related testing   DIN EN 60811-404