

RJ45 Heavy Duty male 90° down IDC

8-pol., AWG26-24, 5- 9mm, shielded, CAT5

Ethernet

Male 90°

90° on bottom

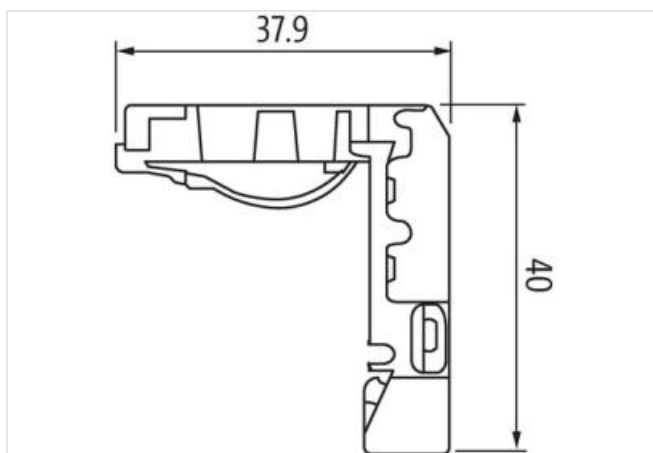
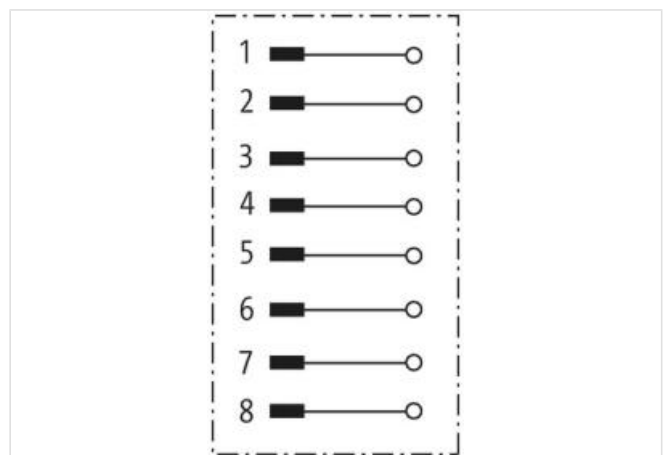
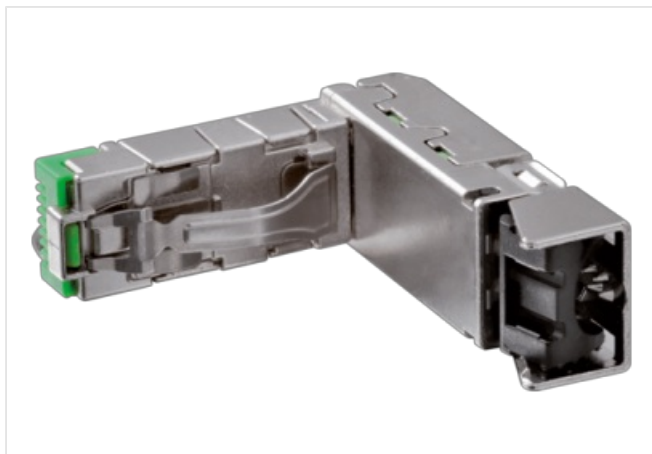
RJ45, 8-pole

Field-wireable

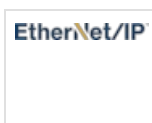
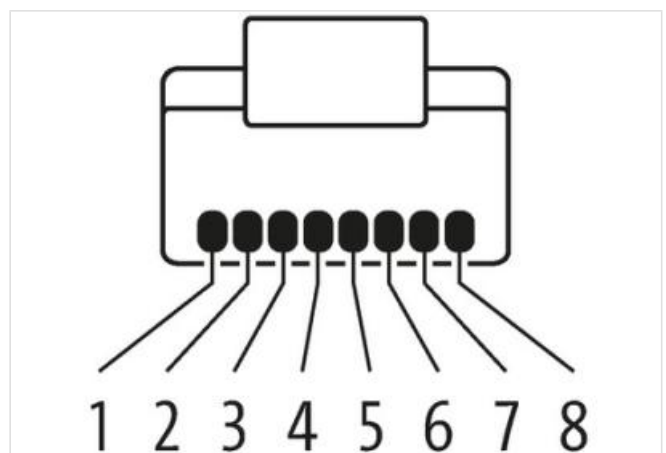
shielded

Protection IP20

The resistance to aggressive media should be individually tested for your application. Further details on request.

[Link to Product](#)**Illustration**

Product may differ from Image

**Side 1**

Family construction form

RJ45

Material contact

Copper alloy

No. of poles 8

Commercial data

ECLASS-6.0	27260705
ECLASS-6.1	27260703
ECLASS-7.0	2744010
ECLASS-8.0	2744010
ECLASS-9.0	27440114
ECLASS-10.1	2744010
ECLASS-11.1	2744010
ECLASS-12.0	27440114
ETIM-5.0	EC002635
customs tariff number	85366990
GTIN	4048879671217
Packaging unit	1

Electrical data | Supply

Operating voltage AC	50 V
Operating voltage DC	50 V
Operating current max.	1,75 A

Industrial communication

Transfer parameters	CAT5e (ANSI/TIA/EIA-568-B.2-2001), CAT5 Class D according to ISO/IEC 11801
Data transmission rate max.	1000 MBit/s

Installation

Connection cross section min.	0,14 mm²
Connection cross section max.	0,25 mm²
AWG number min.	26
AWG number max.	24

Installation | Connection

Connection	Cut clamps IDC
Mating cycles min.	750

Device protection | Electrical

Degree of protection (EN IEC 60529)	IP20
Overvoltage category (EN 60950-1)	I

Mechanical data | Material data

Coating housing	nickel plated
Coating contact	gold plated
Material housing	Zinc die-casting
Material contact carrier	PC

Mechanical data | Mounting data

Clamping range min.	5 mm
Clamping range max.	9 mm

Environmental characteristics | Climatic

Operating temperature min.	-40 °C
Operating temperature max.	70 °C

Important installation notes

Note on strain relief	Protect the connectors by suitable measures from mechanical loads, e.g. by the usage of cable ties.
Note on bending radius	Attention: Observe the permissible bending radii when laying cables, as the IP protection class can be endangered by excessive bending forces.