

**SVS VALVE PLUG FORM A 18MM FIELD-WIREABLE**

12...30V DC LED M16x1.5 Power Switch

Form A (18 mm)

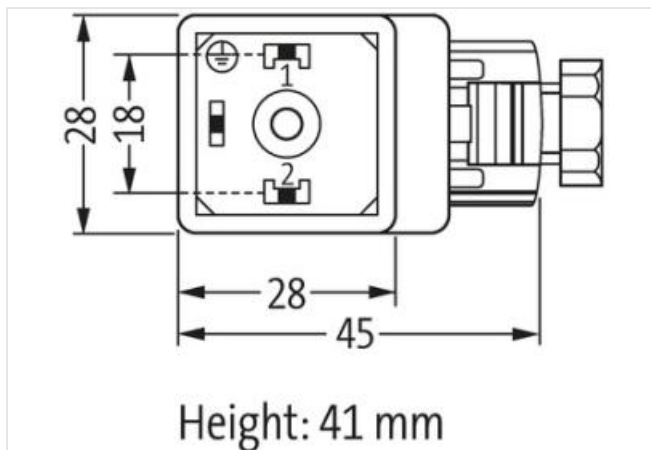
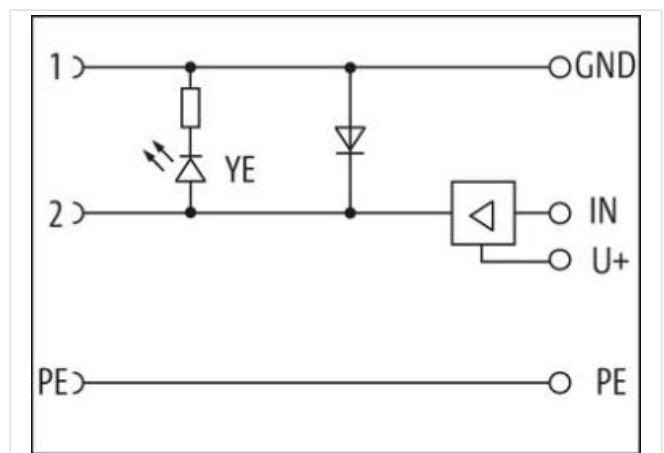
12...30 V DC

LED and switching amplifier

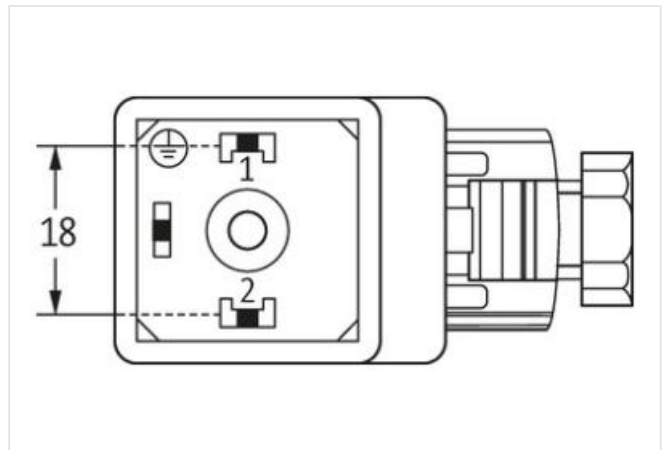
metric

Plastic housings with good resistance against chemicals and oils.

The resistance to aggressive media should be individually tested for your application. Further details on request.

[Link to Product](#)**Illustration**

Product may differ from Image

**Side 1**

Degree of protection (EN IEC 60529)

IP65

**Commercial data**

ECLASS-6.0

27279221

|                       |               |
|-----------------------|---------------|
| ECLASS-7.0            | 27440104      |
| ECLASS-8.0            | 27440104      |
| ECLASS-9.0            | 27440102      |
| ECLASS-10.1           | 27440105      |
| ECLASS-11.1           | 27440105      |
| ECLASS-12.0           | 27440105      |
| ETIM-5.0              | EC002062      |
| customs tariff number | 85366990      |
| GTIN                  | 4048879187398 |
| Packaging unit        | 1             |

#### Electrical data | Supply

|                                    |      |
|------------------------------------|------|
| Operating voltage DC min.          | 12 V |
| Operating voltage DC max.          | 30 V |
| Current operating per contact max. | 2 A  |

#### Diagnostics

|                       |        |
|-----------------------|--------|
| Status indication LED | yellow |
|-----------------------|--------|

#### Installation

|                               |                     |
|-------------------------------|---------------------|
| Connection cross section max. | 1,5 mm <sup>2</sup> |
|-------------------------------|---------------------|

#### Installation | Connection

|                        |                |
|------------------------|----------------|
| Connection information | field-wireable |
| Tightening torque      | 0,4 Nm         |
| Mounting set           | M16 x 1.5      |

#### Installation | Pin assignment

|              |        |
|--------------|--------|
| No. of poles | 2 + PE |
|--------------|--------|

#### Device protection | Electrical

|  |                   |
|--|-------------------|
| Additional condition protection degree | inserted, screwed |
| Short-circuit protected                | yes               |

#### Mechanical data | Mounting data

|                     |       |
|---------------------|-------|
| fastening screw     | M3    |
| Clamping range min. | 5 mm  |
| Clamping range max. | 10 mm |

#### Environmental characteristics | Climatic

|                            |        |
|----------------------------|--------|
| Operating temperature min. | -20 °C |
| Operating temperature max. | 60 °C  |

#### Important installation notes

|                        |   |
|------------------------|---|
| Note on strain relief  | Protect the connectors by suitable measures from mechanical loads, e.g. by the usage of cable ties.   |
| Note on bending radius | <b>Attention:</b> Observe the permissible bending radii when laying cables, as the IP protection class can be endangered by excessive bending forces. |